

Honeywell

Enterprise Provisioner

User Guide

Disclaimer

Honeywell International Inc. ("HII") reserves the right to make changes in specifications and other information contained in this document without prior notice, and the reader should in all cases consult HII to determine whether any such changes have been made. The information in this publication does not represent a commitment on the part of HII.

HII shall not be liable for technical or editorial errors or omissions contained herein; nor for incidental or consequential damages resulting from the furnishing, performance, or use of this material. HII disclaims all responsibility for the selection and use of software and/or hardware to achieve intended results.

This document contains proprietary information that is protected by copyright. All rights are reserved. No part of this document may be photocopied, reproduced, or translated into another language without the prior written consent of HII.

Copyright © 2018 Honeywell International Inc. All rights reserved.

Web Address: www.honeywellaidc.com

Other product names or marks mentioned in this document may be trademarks or registered trademarks of other companies and are the property of their respective owners.

For patent information, refer to www.hsmpats.com.

TABLE OF CONTENTS

Customer Support	iii
Technical Assistance	iii
Product Service and Repair	iii
Limited Warranty	iii
Chapter 1 - Get Started	1
What is Enterprise Provisioner?	1
Download Enterprise Provisioner	2
Install Enterprise Provisioner	2
Start Enterprise Provisioner	2
Enterprise Provisioner Overview	3
Chapter 2 - Use Enterprise Provisioner	5
Settings	5
Provisioning Tasks	6
Task List	7
Create Bar Codes	8
HTTP Server	9
Restore Defaults	10
Import	10
Export	11
Preferences	11
Help	12
About	12

Chapter 3 - Troubleshoot..... 13

Troubleshoot Enterprise Provisioner13

Customer Support

Technical Assistance

To search our knowledge base for a solution or to log in to the Technical Support portal and report a problem, go to www.hsmcontactsupport.com.

For our latest contact information, see www.honeywellaidc.com/locations.

Product Service and Repair

Honeywell International Inc. provides service for all of its products through service centers throughout the world. To obtain warranty or non-warranty service, return your product to Honeywell (postage paid) with a copy of the dated purchase record. To learn more, go to www.honeywellaidc.com and select **Service & Repair** at the bottom of the page.

Limited Warranty

For warranty information, go to www.honeywellaidc.com and click **Get Resources > Product Warranty**

What is Enterprise Provisioner?

Enterprise Provisioner is a desktop application used to provision Honeywell Android devices. Provisioning includes:

- Device settings
- OS updates
- installing files (APK, Licenses, etc.)
- Run an app
- File operations on the device
 - Create file/directory
 - Rename file/directory
 - Copy file/directory
 - Delete file/directory
 - Delete directory content
- Wait for network, reboot, intent
- Reboot the device
- Delay provisioning for X number of milliseconds

Once settings have been changed and provisioning tasks have been defined, you generate 2D bar codes that a device can scan to be provisioned. The app has a built-in HTTP server for transferring files to devices. The app also supports remote file servers such as Staging Hub.

Note: *Currently, Enterprise Provisioner can only be installed on a Windows OS.*

Download Enterprise Provisioner

To download Enterprise Provisioner

1. Go to the Honeywell software download website at <https://hsmftp.honeywell.com>.
2. Sign in or create an account if you don't already have one.

Note: You need to download and install the Download Manager. Click on the link and follow the screen prompts.

3. Locate the Enterprise Provisioner software in the directory and download.

Install Enterprise Provisioner

To install the software, run the EP_installer.msi file that was downloaded.

Start Enterprise Provisioner

Start Enterprise Provisioner from by clicking the desktop shortcut that was created during installation or from the Start menu:

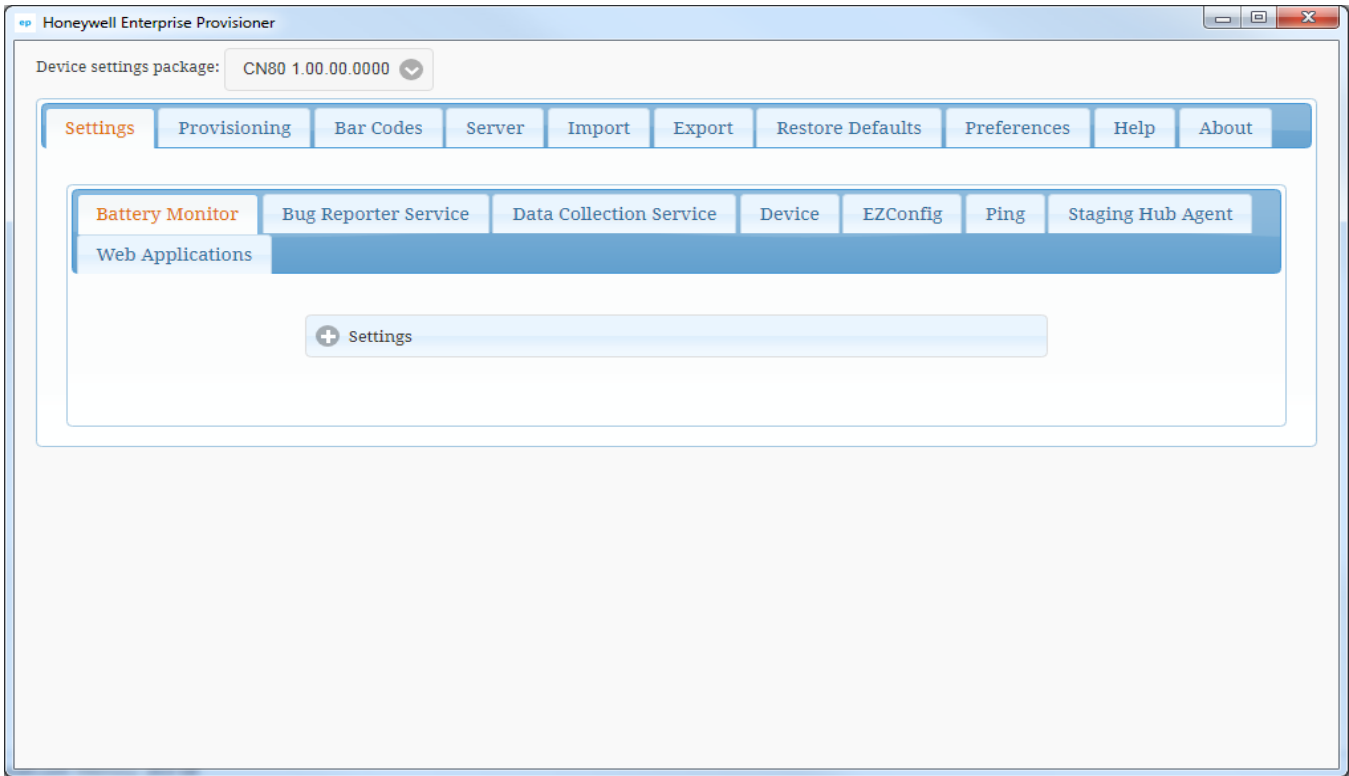
- Click on **Start > Honeywell > Enterprise Provisioner**.

If you are using the Staging Hub Foundation, you can start Enterprise Provisioner directly from the Staging Hub Console:

- Click on **Tools > Start Enterprise Provisioner**.

Enterprise Provisioner Overview

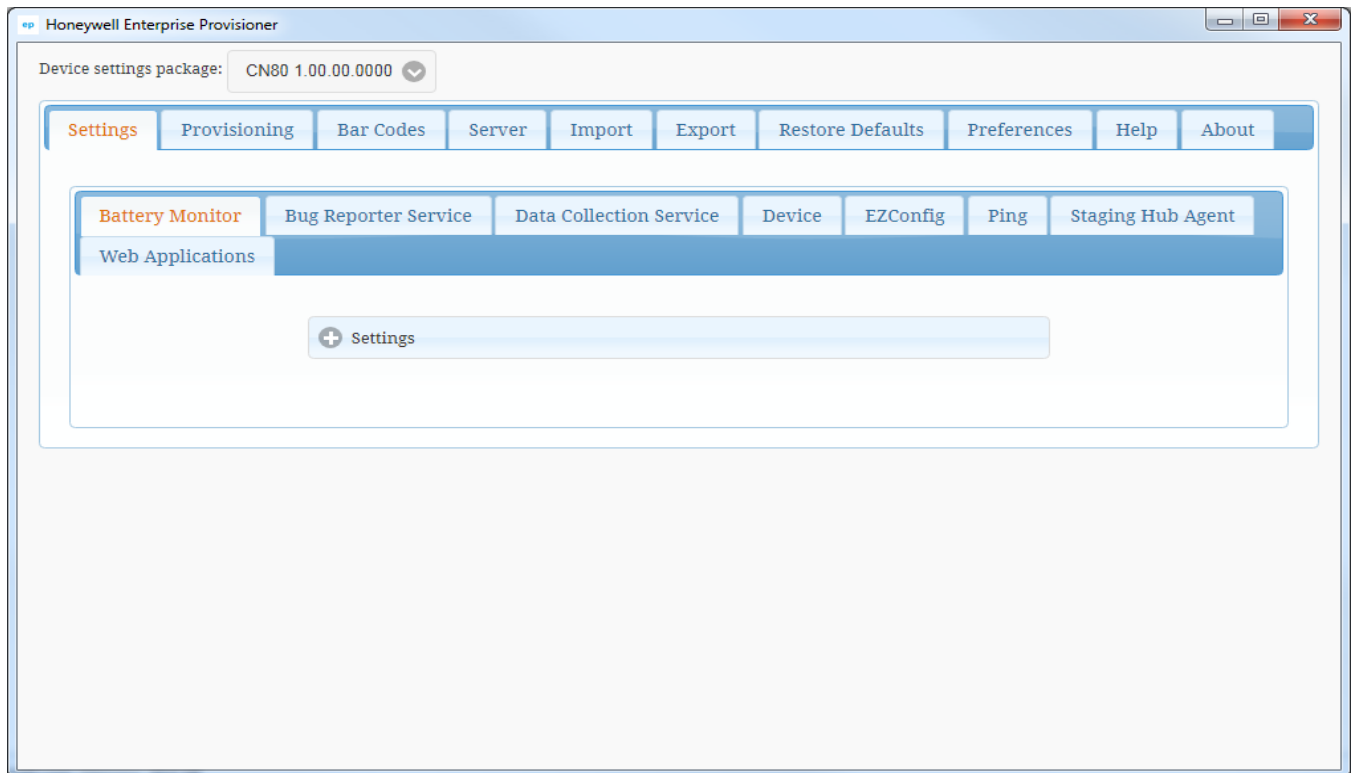
Select the device settings package on the top left of the screen. Then use the tabs on the top of the screen to change menus and create tasks for the device selected.



Note: Use the zoom option to make everything on a page larger or smaller. To make everything on the page larger, hold **Ctrl** and push the mouse wheel up (forward). To make everything on the page smaller, hold **Ctrl** and push the mouse wheel down (backward).

Settings

The **Settings** tab is used to configure different settings for a device. Each subsystem has a tab under the Settings tab. Click on each tab and make the changes you want for your device.



To send the settings to the device, see [Create Bar Codes](#). To save the settings to an XML file, see [Export](#).

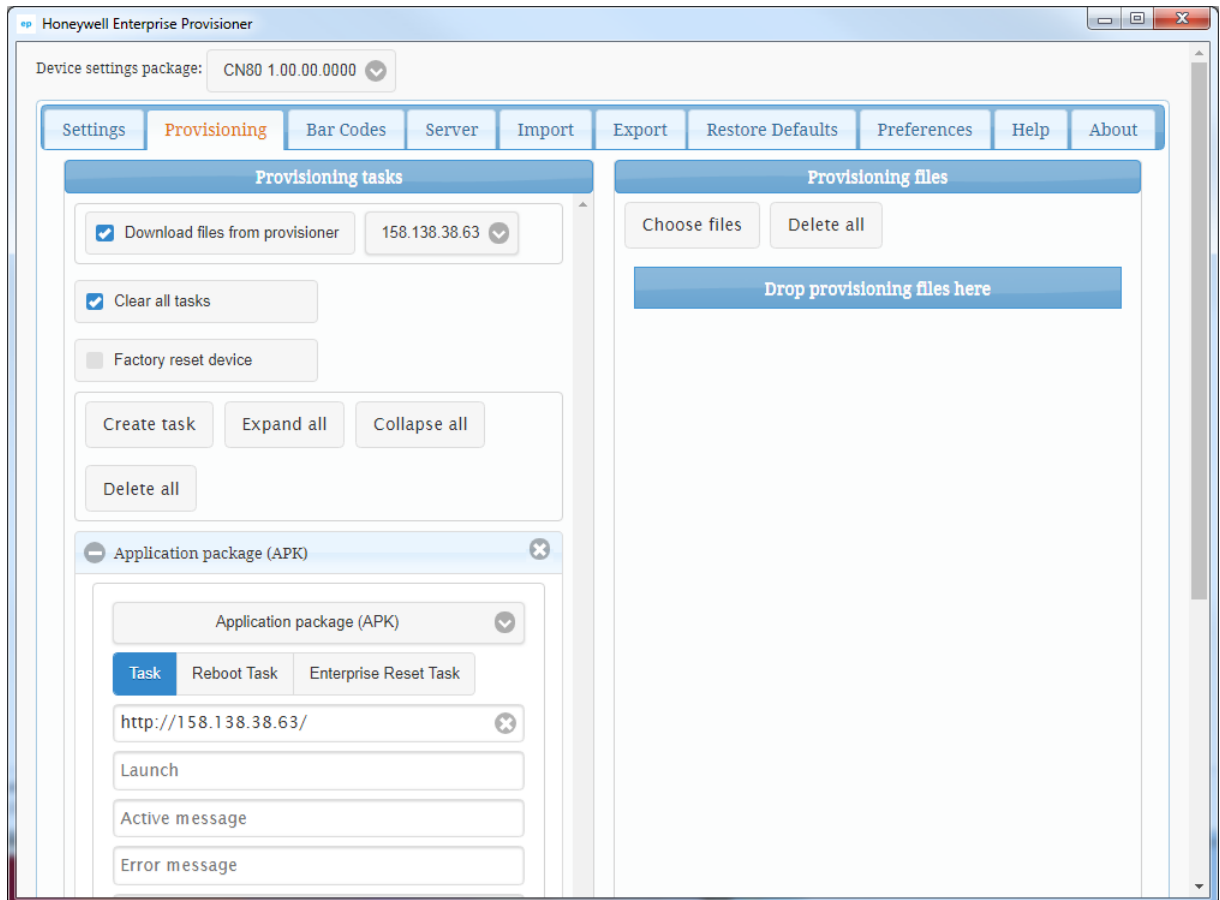
Note: If you want to add provisioning tasks with the settings, set up the [Provisioning Tasks](#) before creating bar codes or exporting.

Provisioning Tasks

Provisioning tasks are files to download and install on a device or device file operations.

To create provisioning tasks

1. Click the **Provisioning** tab on the top of the screen.
2. Click the **Create task** button.
3. Select a task from the drop-down list in the left panel and/or add your files to the right panel by dragging and dropping or use the **Choose files** button.



When you drag and drop files, the task is created automatically and the source and destination paths are filled in by Enterprise Provisioner.

When the provisioning tasks are created, the files to be transferred to the device are automatically copied to the local server.

Note: The **Download files from provisioner** check box is checked by default. When this is checked, the application automatically adds the correct source path to the task. If you uncheck this option, you must add the correct source path yourself.

Task List

You can change the order of the tasks in the Provisioning tasks pane by dragging and dropping.

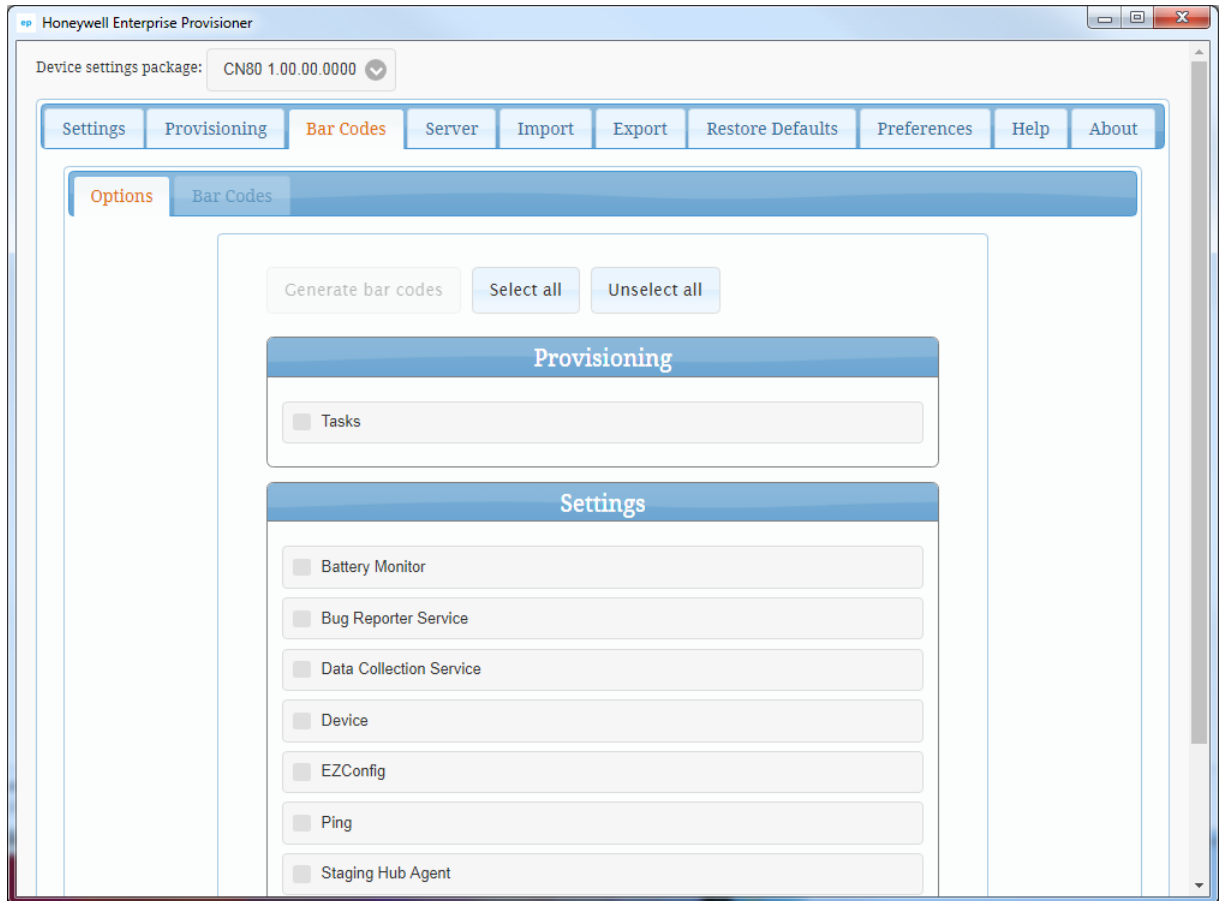
To delete the list of tasks, click on the **Delete all** button. To delete the list of Provisioning files, click **Delete all**.

Create Bar Codes

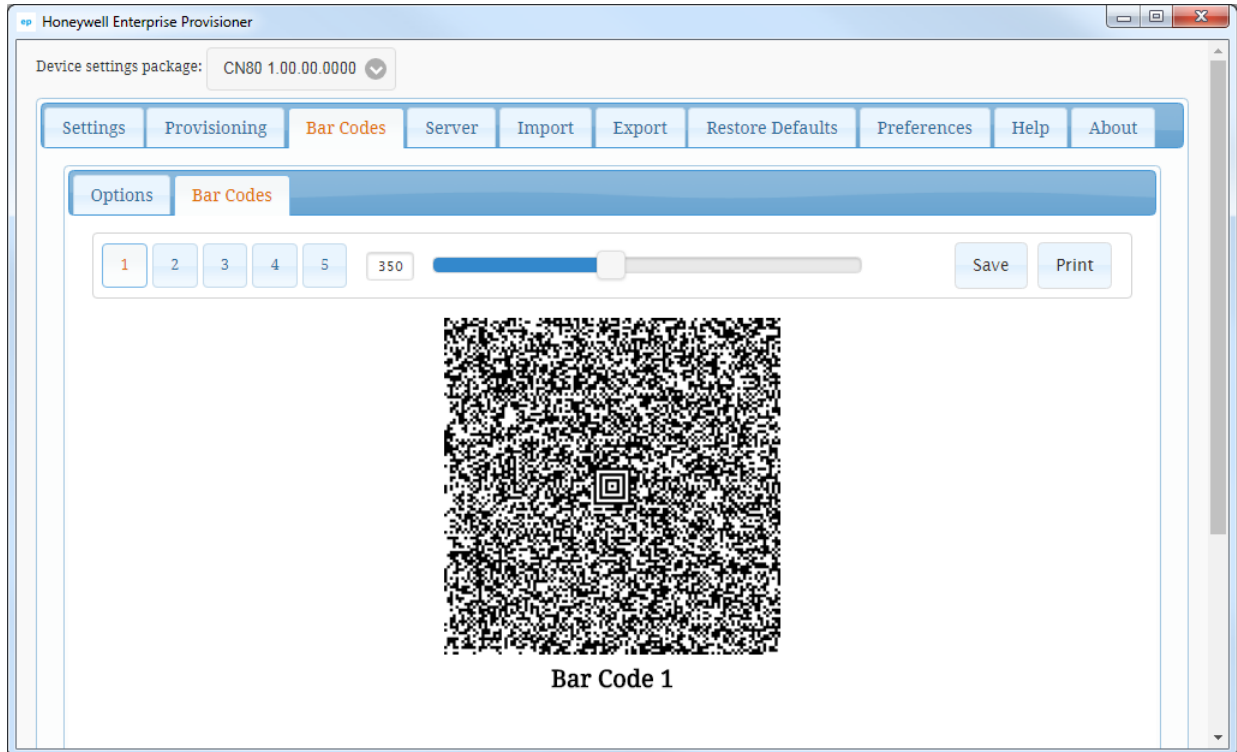
Once you have configured the settings and created the provisioning tasks, generate and scan bar codes to provision a device.

To create provisioning bar codes

1. When settings and provisioning tasks are configured, click on the **Barcodes** tab.
2. On the Options tab, check the appropriate boxes and then click on the **Generate Bar Codes** button.



3. On the Bar Codes tab, size the bar codes using the slider. Use the buttons to the left of the slider to select each bar code.



4. Click on **Save** and select the folder where you want the files saved. The bar codes are saved as separate image files.
5. To print the bar codes, click the **Print** button. Resize if necessary and add a description. Click **Print**.

Note: You can print bar code and scan them or scan them directly on the screen.

HTTP Server

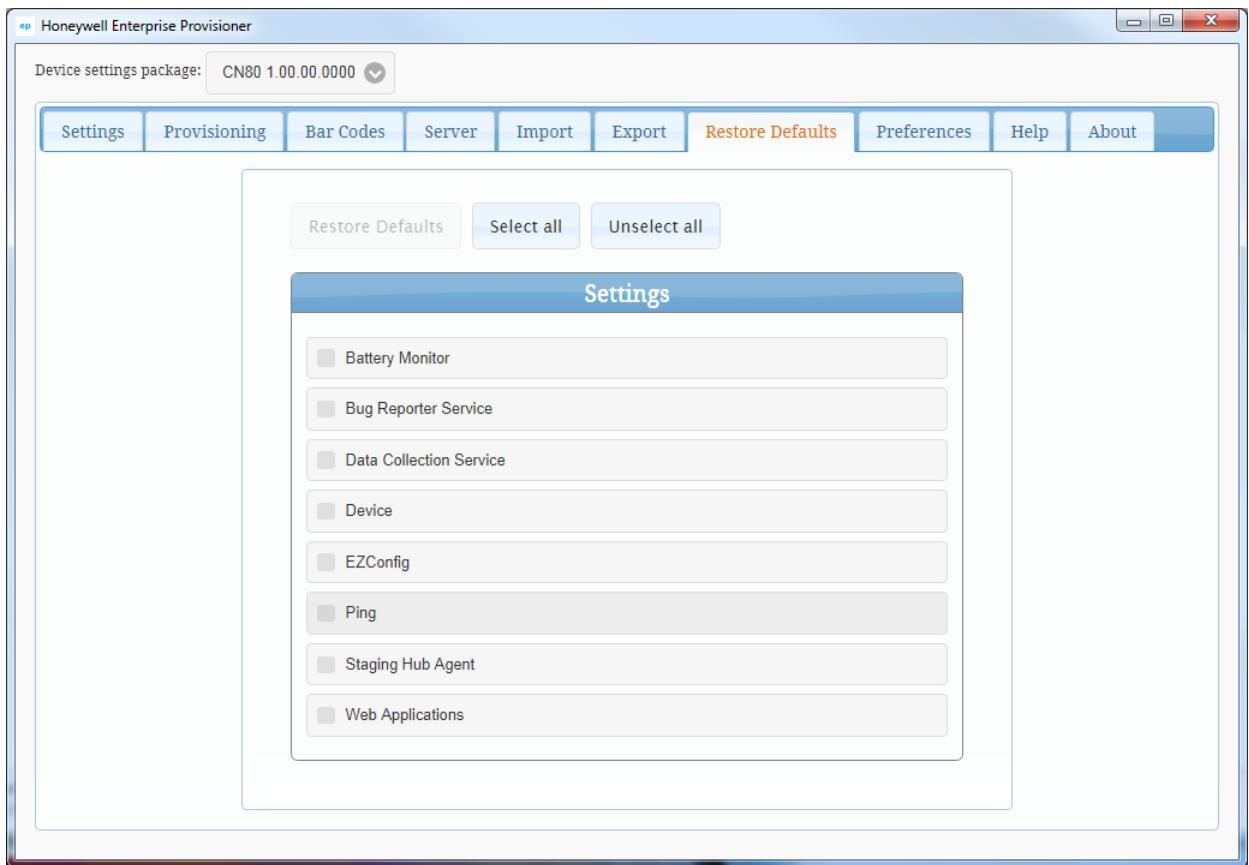
The server tab displays the web server's home page and the file transfer log. To check that the server is ready,

- Open your browser and go to the server's home page (e.g. <http://172.19.13.14>) or
- Test a simple provisioning file (e.g. <http://172.19.13.141/files/img1.jpg>)

To generate the URL for a test provisioning file, choose or drag-n-drop an image file to the provisioning page. Enterprise Provisioner will create a task. You can then cut-n-paste the generated URL to your browser which should display the image.

Restore Defaults

Restore defaults is used to restore the default settings of one or more subsystems for the currently selected device package.



Note: If you want to save your settings and tasks before restoring the defaults, see [Export](#) on page 11.

To restore default settings of one or more subsystems

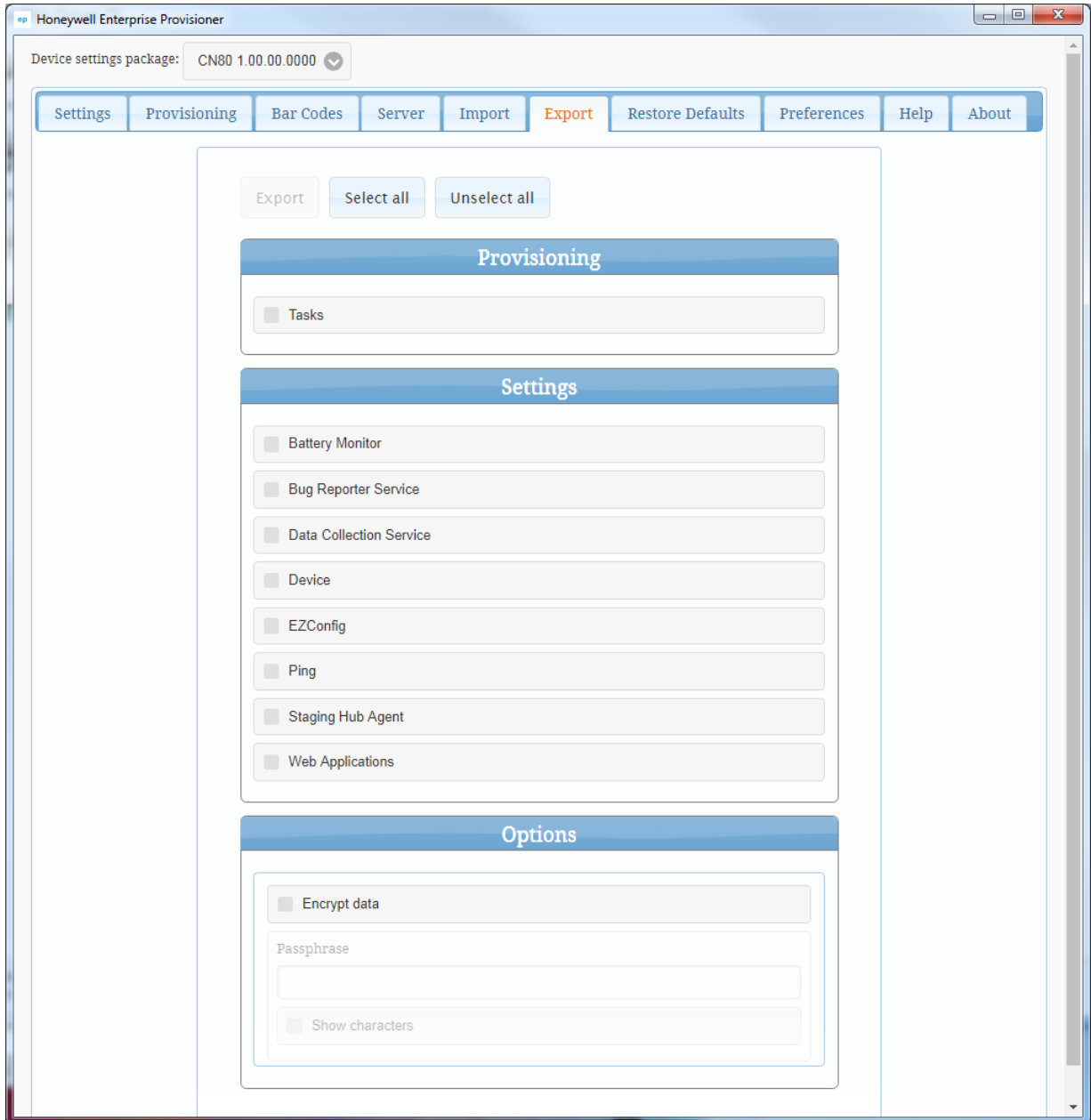
1. Go to the **Restore defaults** tab and check the appropriate check boxes.
2. Click the **Restore defaults** button to apply.
3. Confirm your action to restore defaults.
4. Enterprise Provisioner restarts with the default settings.

Import

Use the Import tab to import provisioning tasks and settings XML files that have been generated by the [Export](#) function. Drag and drop the XML file in the panel or use the **Choose Files** button. When the file is imported successfully, click **OK**. Enterprise Provisioner restarts and imports the selected XML files. Once the file is imported, you can make changes.

Export

Use the Export tab to export provisioning tasks and/or settings to an XML file. Select the tasks and click **Export**. Select where you want to save the file.



Once the file is saved, you can [Import](#) the file if you want to make changes.

Preferences

Select the theme you want applied to the Enterprise Provisioner application.

Help

Click on the Help tab to open the *Enterprise Provisioner User Guide*.

About

The About screen gives the application and subsystem names and versions.

Troubleshoot Enterprise Provisioner

Problem	Solution
Network not working	<ul style="list-style-type: none">• Ping your device to make sure you can communicate.• Check your server (URL and IP address)
My IP address is not showing up in the Provisioning tab under Provisioning task.	Close and restart the application.

Honeywell
9680 Old Bailes Road
Fort Mill, SC 29707

www.honeywellaidc.com